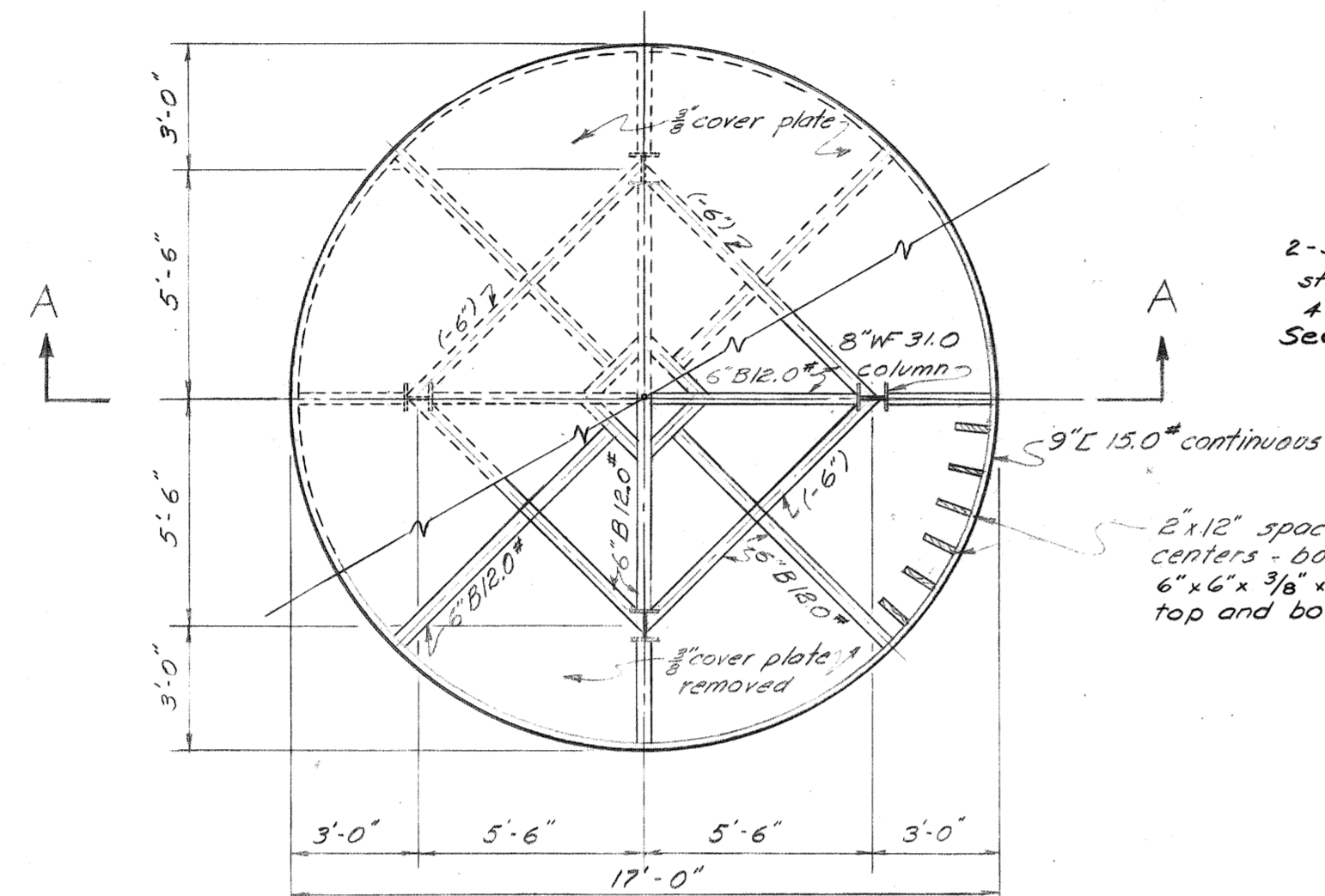
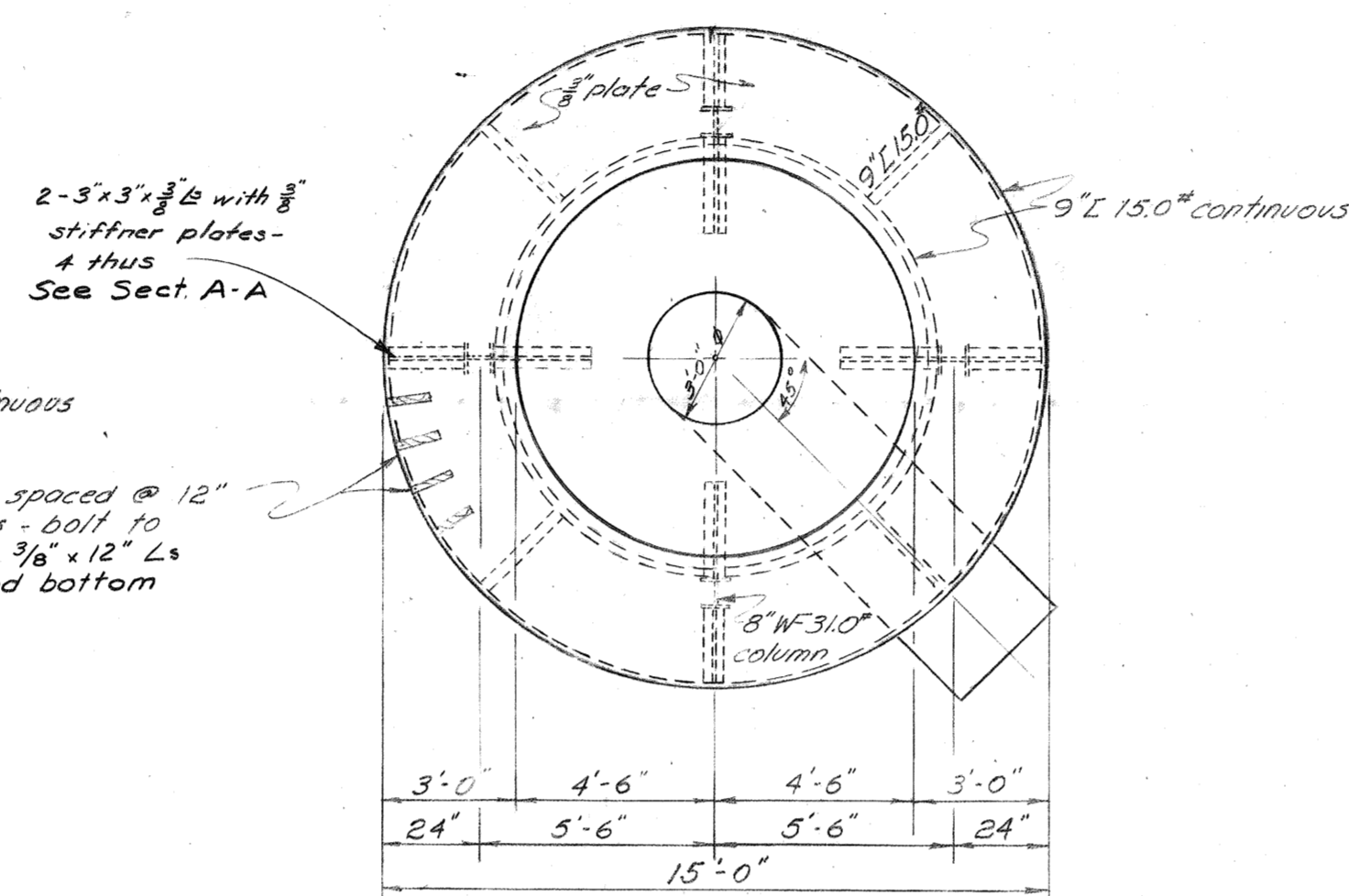


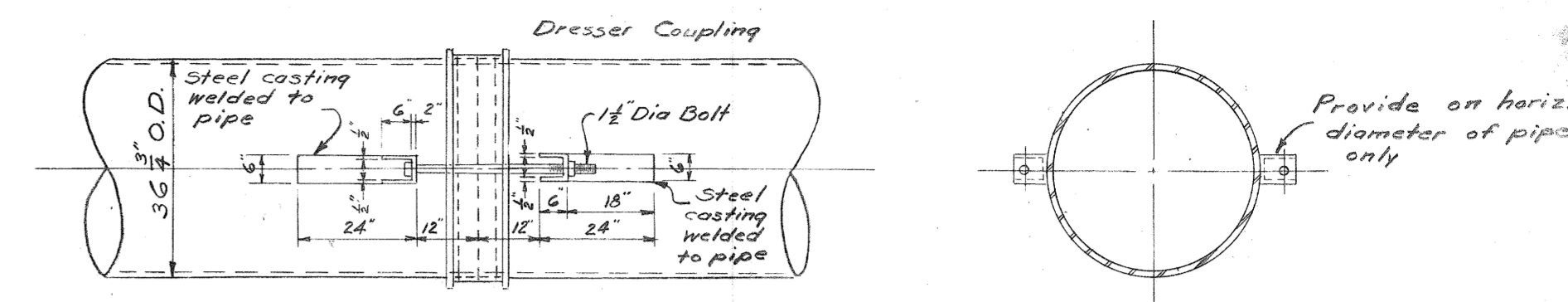
ALTERNATE STEEL PIPE JOINT
NO SCALE



TOP PLAN

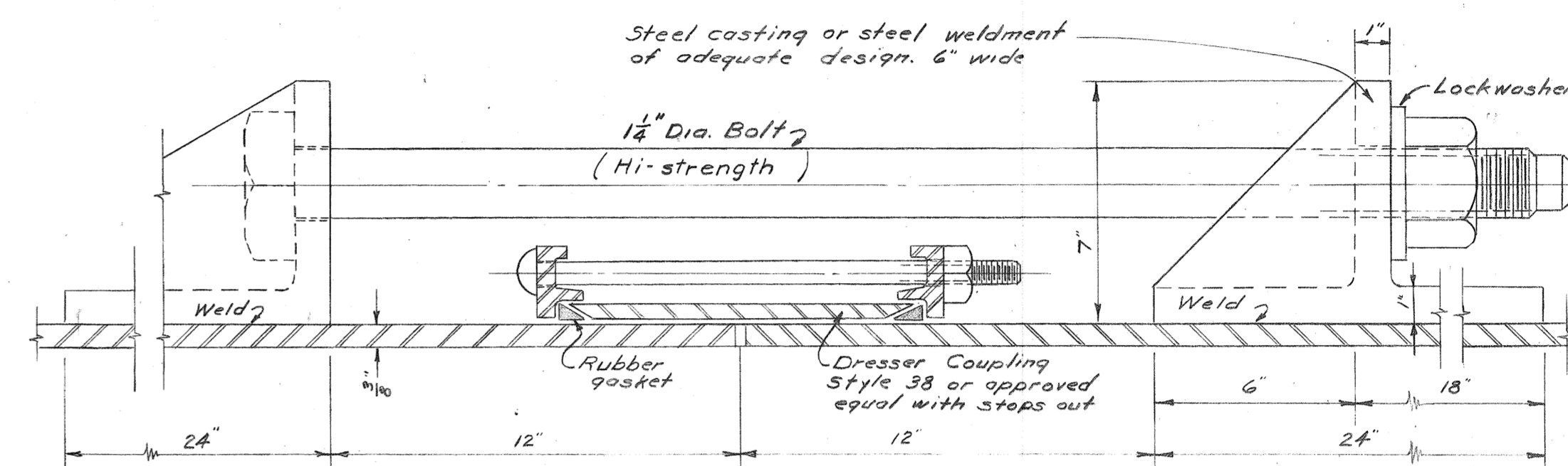


SECTIONAL PLAN B-B

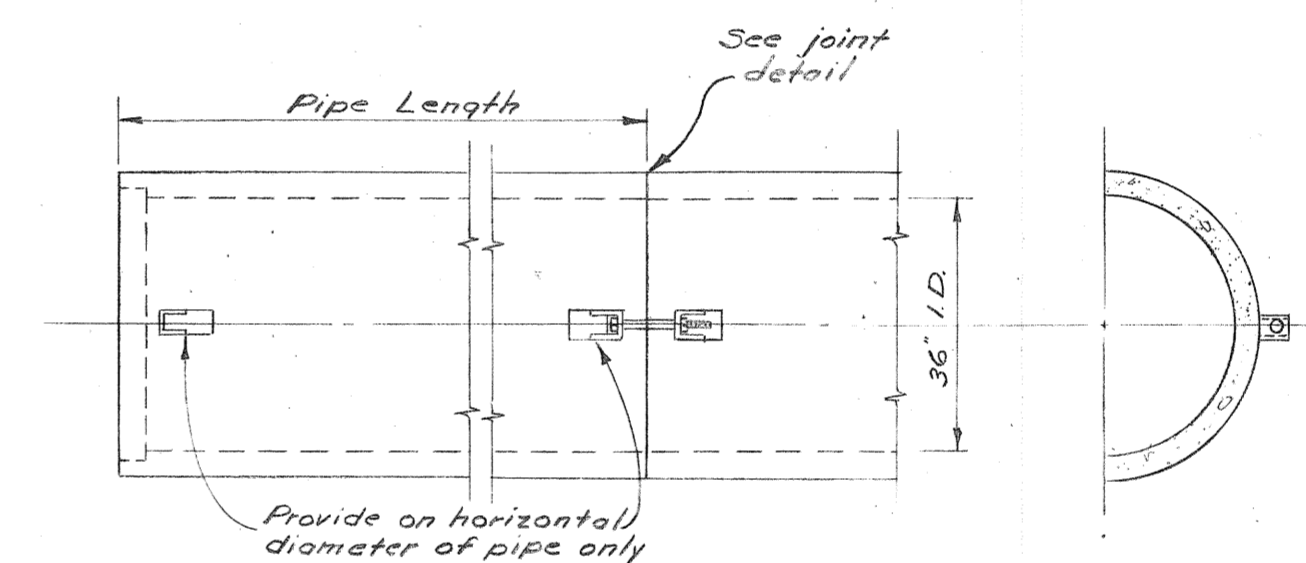


ELEVATION

SECTION

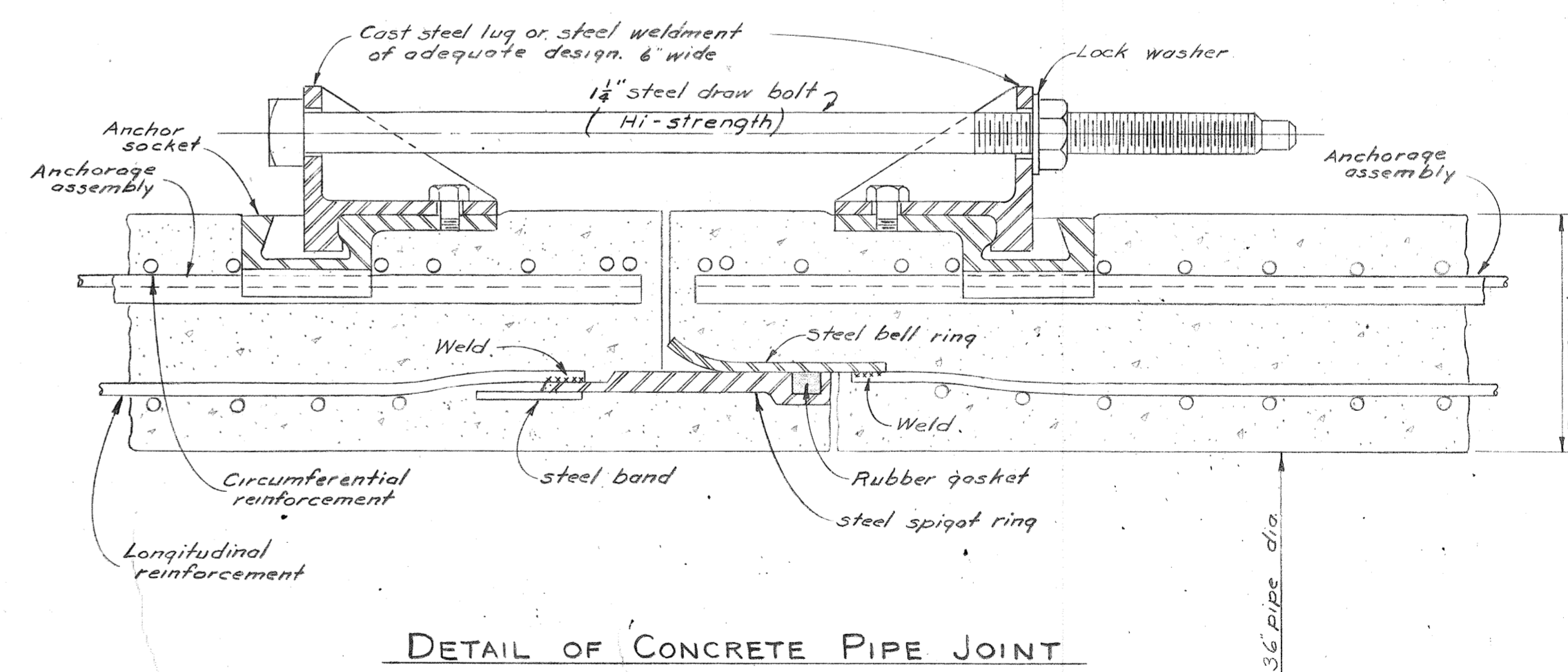


DETAIL OF STEEL PIPE JOINT
No SCALE

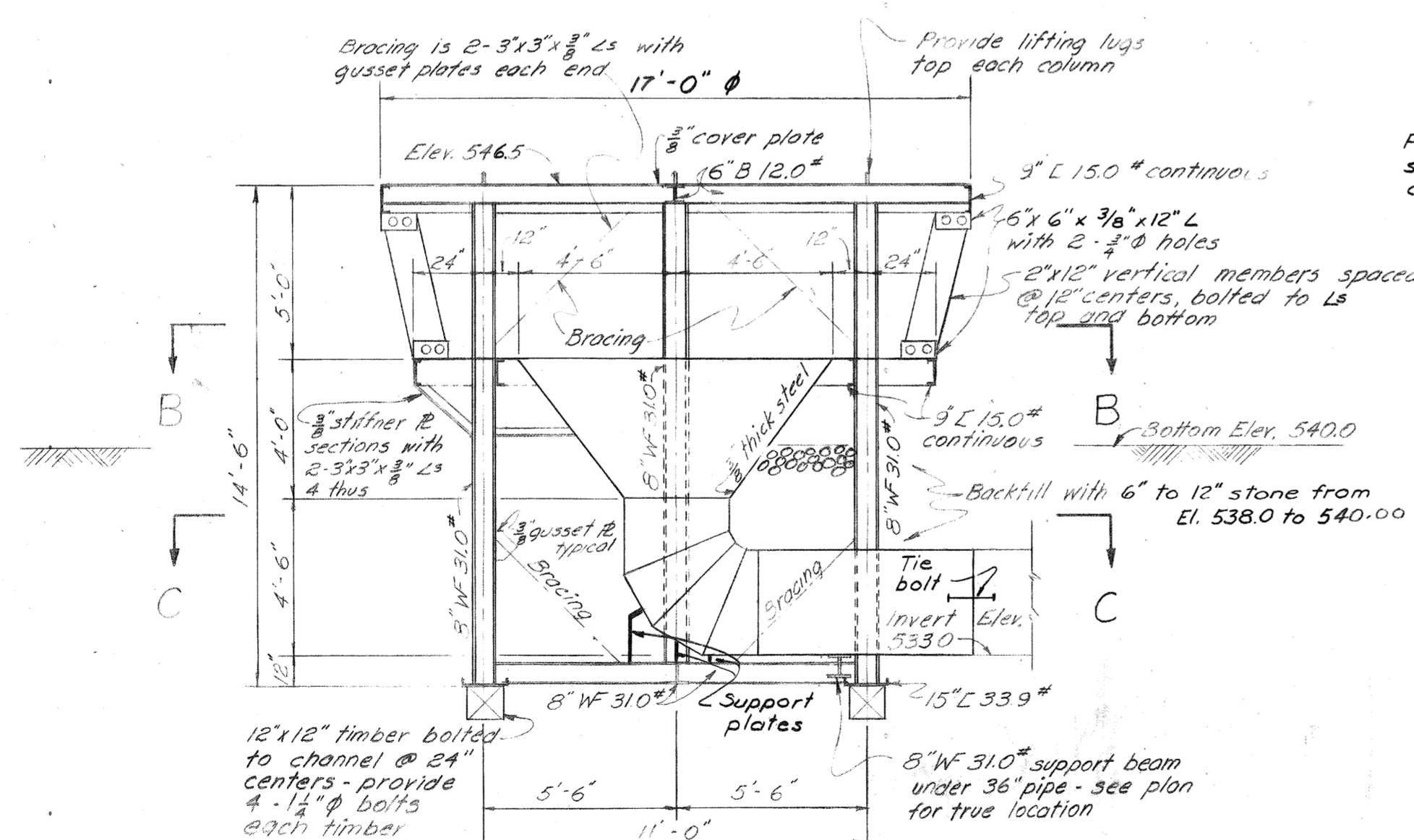


ELEVATION

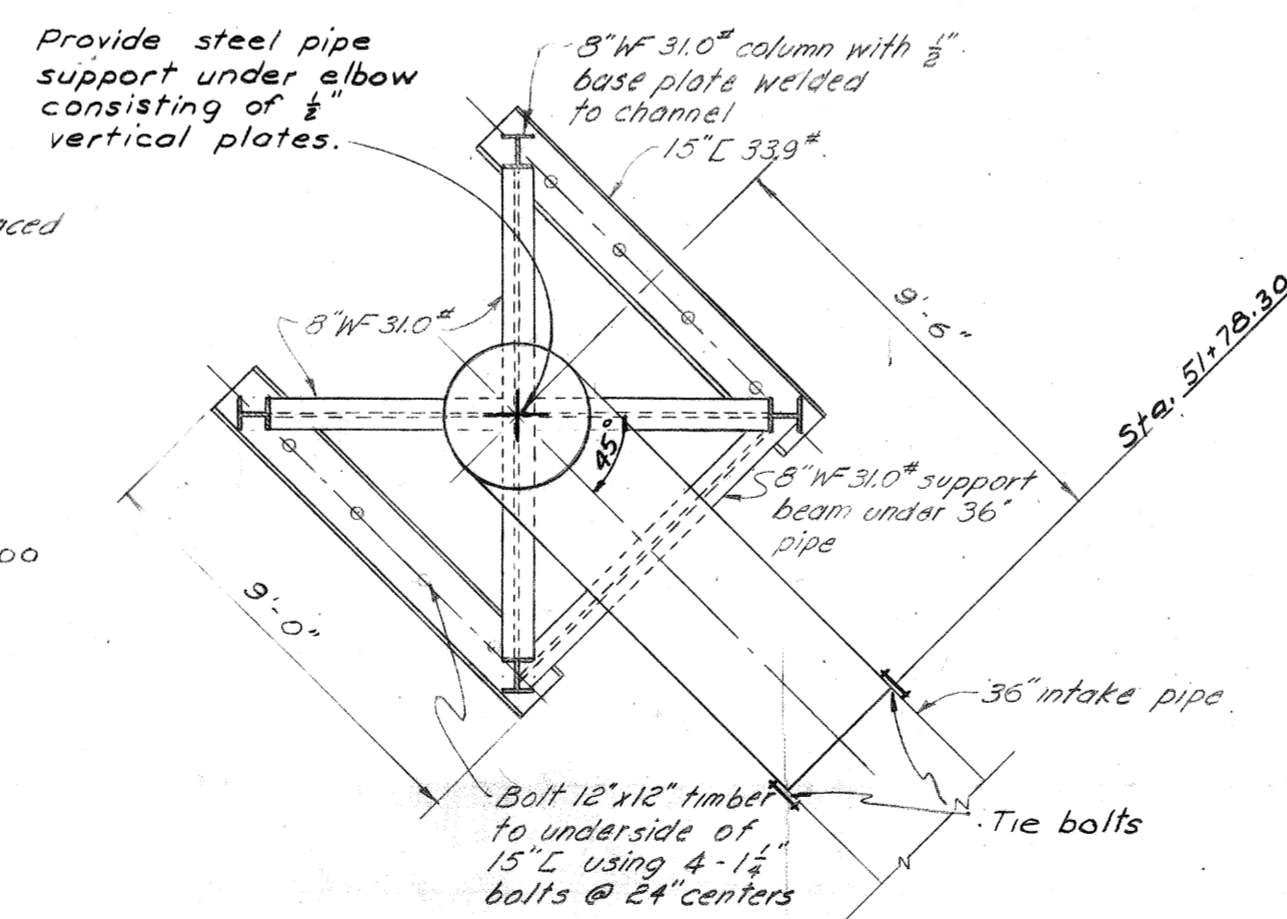
SECTION



DETAIL OF CONCRETE PIPE JOINT



SECTION A-A



SECTIONAL PLAN C-C

1. Backfill entirely around 90° bend with dry mix. conc. to El 538.0.
2. Stone backfill to be placed over area 2' in dia. centered on crib opening.
3. Contractor shall provide suitable protection over crib openings during installation to prevent entry of sand, stone, etc.

INTAKE CRIB WITH
SINGLE STEEL INTAKE
Scale: $\frac{1}{2}" = 1'-0"$

SPECIAL 36" REINFORCED CONCRETE WATER PIPE						
Pipe	Min. Wall Thickness	Min. Conc. Strength psi	Circumferential Reinforcement—sq. inch	Inner Cage	Outer Cage	D-load to produce 0.001 inch crack (lbs. per lin. ft. of diam.)
		7 days	28 days			
C/355		2600	4500	Total for 2 cages=0.44		1600
A	4"			(Same as AWWA C-302)		
C/355		3000	5000	0.40	0.30	2500
B	4"					

Note: One 3 edge bearing test of each class pipe with results approved by the Engineer shall be made before shipment.

MCNAME, PORTER AND SEELEY CONSULTING ENGINEERS ANN ARBOR, MICHIGAN				TRAVERSE CITY, MICHIGAN WATER WORKS IMPROVEMENTS INTAKE LINE AND GRIB	
SCALE AS NOTED		ISSUED MAR. 1964			
DRAWN P. S. L.		TRACED J. E. D.		CHECKED R. F. B.	
ISSUE		NATURE OF REVISION		DATE	
				INTAKE GRIB DETAILS	
CONTRACT 1				APW-Mich. 218-G	
				SHEET 2	